



# PREMIER EVENTS



**EVENT TIME · TRACK TIME · GOOD TIME**

---



45399 Woodward Avenue, Pontiac, Michigan  
248.326.9999 ■ [events@M1Concourse.com](mailto:events@M1Concourse.com)

# THE CONCOURSE

M1 Concourse blends style and speed, offering the perfect venue for any event at our 87-acre auto enthusiast playground. Our state-of-the-art facility features indoor and outdoor spaces that overlook the 1.5 mile M1 Circuit. M1 can transform any event into a one-of-a-kind exclusive experience. M1 is conveniently located on the legendary Woodward Avenue in Pontiac and is less than 20 miles from Detroit.

## Event Center

### *Event Center Features*

- Capability to host a variety of corporate, social, and private events.
- Indoor, open-air, and outdoor spaces with stunning views of the M1 Circuit and the ability to accommodate events anywhere from 20 to 2,000 guests.
- In-house lighting, furniture, state-of-the-art audio, and live-stream capabilities.
- A curated list of preferred catering vendors.
- Our Events Team provides a convenient, efficient, and creative inclusive experience to complement your event.



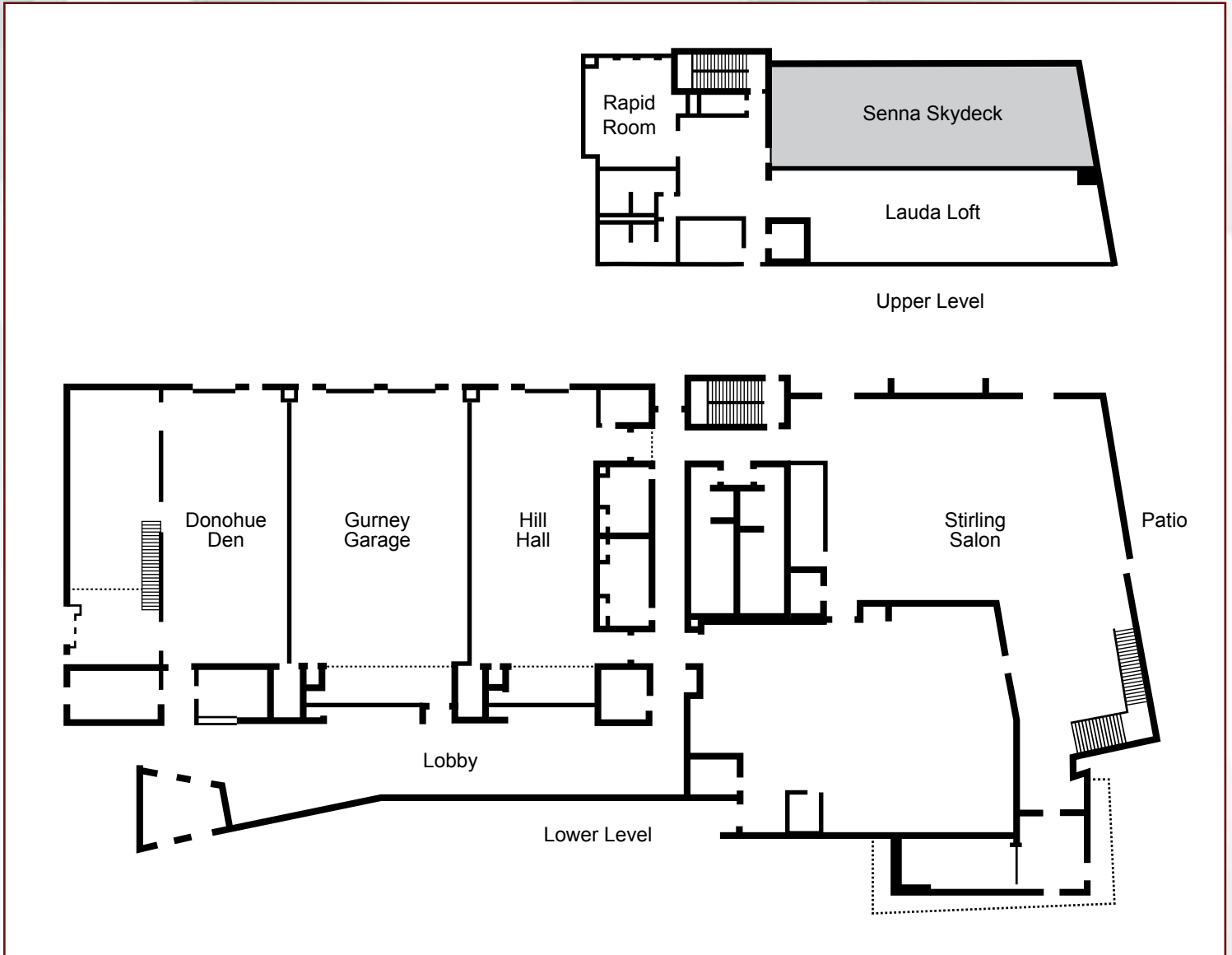
## Plaza

The 40,000 sq. ft. plaza offers a unique opportunity for outdoor festivities. The plaza has the capability to hold up to 2,000 guests, allowing for endless event possibilities.

## Pavilion

The 6,000 sq. ft. event pavilion tent can be easily incorporated into activities on track or at the Event Center.

# CAPACITY CHART AND FLOOR PLAN



Event Space	Sq. Ft. (M <sup>2</sup> )	Reception	Banquet	Theatre	Classroom
Grand Concourse Ballroom	6,312 (586)	650	400	500	300
Donohue Den	1,700 (158)	125	150	150	80
Gurney Garage	2,512 (233)	250	200	200	140
Hill Hall	2,100 (195)	125	150	150	80
Lobby	1,282 (119)	125	70	100	Varies
Plaza	40,000 (3716)	2,000			Varies
Lauda Loft & Senna Skydeck	2,641 (245)	200	150	200	Varies
Stirling Salon	3,341 (310)	240	200	200	130
Pavilion Event Tent	6,000 (557)	500	250	500	300
Rapid Room	500 (46)	50	40	50	36

# ACTIVITIES

## ***Race Speed Track Experience (RSTE)***

Riding Sright seat, participants gets to feel two (2) full speed laps around the M1 Circuit with a M1 professional driver in a M1 Concourse Performance Fleet Vehicle.

## ***Laser-Timed Autocross***

Autocross is a competitive, timed driving experience that runs through a multi-outlined course on the Arena. Most participants love the element of competition, and it provides a driving activity for those waiting to drive on the full road course.

**The M1 Circuit is a 1.5 mile performance track, with 11 corners.**



## ***Immersive Simulator***

A full-motion simulator which participants can use when they are relaxing off-track or waiting to go out. The simulator uses I-Racing software, offering simulation on all available tracks with a wide selection of performance vehicles.

## ***Arena***

This 2.5-acre space offers room for activities such as autocross, as well as custom displays and gatherings.

## ***Performance Driving Lead***

Allows guests to drive performance vehicles on the M1 Circuit. Learn the fundamentals of high-performance driving from a professional. Includes track use, instructor, and lead car. Guests can bring their own performance vehicles or rent from the M1 Concourse Performance Fleet. Driver must be over 18 and have a valid drivers license.





# Riding and Driving on the M1 Circuit

## FREQUENTLY ASKED QUESTIONS

---

### ***Do I need to fill anything out?***

Upon arrival, a waiver will be provided for you to complete. To engage in any riding or driving activities, you are required to complete a waiver and have it reviewed by a member of the M1 Team. A valid Driver's License or Government-issued ID is required.

### ***What do I wear?***

If participating in a driving activity, we ask that you wear non-distracting clothing. We require closed-toed, flat, full heel shoes for all driving track activities. If you are participating in a R.S.T.E. (Race Speed Track Experience), you are not under the same dress code requirements.

### ***Do I need to wear a helmet?***

Yes, a head sock (open-face balaclava) and helmet will be provided. If you prefer to bring your own helmet, it must be Snell SA2015 certified or newer. If you are participating in autocross, a helmet is optional. Under normal conditions, we require a helmet worn at any speed above 55 MPH (88.5 KMH).

### ***Can I bring anything with me?***

We ask you not to bring any loose items as they can be distracting to the drivers and your experience. Feel free to bring your phone/camera to record the ride but... hold on tight!

### ***What age do you have to be to ride?***

Our protocol stipulates that riders must either be at least 12 years of age or weigh a minimum of 80 pounds. Rides for guests under 18 will operate at a slower pace for safety based on their age. Parents must sign a waiver on behalf of the minor.

### ***What age do you have to be to drive?***

Drivers must be at least 18 years of age with a valid driver's license or hold a current valid SCCA (Sports Car Club of America) racing license.



### ***How fast are the rides?***

The duration of each ride takes approx. 5 minutes. During this time, you will experience an exhilarating two laps around our circuit, including all 11 turns (tight and sweeping), straights (1/4 short and 1/3 of a mile long), and reach triple-digit speeds.

### ***What direction does the track go?***

The rotation of the track changes regularly from clockwise to counterclockwise.

### ***What does the M1 Concourse track feature (How many turns, etc.)?***

We have 11 technical turns on our 1.5-mile M1 Circuit track. There is also 15 ft. of elevation change, a 1/3 mile long straight and a 1/4 mile short straight. We have a range of angles for each turn from a hairpin to a sweeping corner. Our track is 30 feet wide.

### ***What cars do you have on track?***

Check out our fleet cars [HERE](#). Cars used on track will vary based on events and weather.

### ***What time is the track open?***

The track can operate from sunrise to sunset. Our M1 staff is on-site to shut the track activity down depending on the light and weather conditions.





### ***Does the track operate in rain or snow?***

#### ***Rain:***

We operate the track when rain is present. When weather conditions present lightning and thunder, that is when we must cease any track operations. Heavy rain minimizing traction may result in delays in driving activities as well.

#### ***Snow:***

Depending on the details of the event, we operate in the snow under certain conditions. Minimally, there must be enough snow where there is a 1 ft bank covering the sides of the track (on top of the grass).

#### ***Temperature:***

Necessary conditions include but are not limited to asphalt temperature at 45F° and higher (for tire asphalt contact effectiveness). Racing tires (slicks) are permitted to run between 65F° and 95F°.

M1 Concourse always maintains the right to grant or cancel track access based on our assessment. Before or during severe weather conditions, we may restrict track activities to maintain a safe and effective operation during the event.

#### ***What else is the track used for?***

The track/dynamics arena can be utilized for all types of activities including autocross, lead-follow driving, and drifting events.

#### ***If I am approved to bring my own car, do I need to fill anything out?***

Please bring your completed [vehicle inspection form](#). Our team will review the document before your car is approved to drive on track.

#### ***Are there any other requirements?***

The sound limit is 90 dBA or lower. This noise limit is in place to maintain good stewardship within the community.

We recommend HANS devices if the vehicle has no roll cage, it is still recommended to wear a hybrid HANS if they have one. Otherwise, just a helmet will suffice.

#### ***What if it is my first time on track?***

Great, we cannot wait to be a part of your first time on track! Please let our instructors know so we help you have the best experience. Our instructors will host a Chalk Talk reviewing all track rules.

#### ***Can I have the dimensions of the vehicle dynamics area?***

The Arena measures 275 feet by 325 feet- approximately 2.5 Acres with a 1.5% grade from center to both north and south.

#### ***Do you have fuel available on site?***

We have our own gas station available here at M1 Concourse by Sunoco. The gas station carries Regular (the lowest octane fuel 87UL), Midgrade (the middle range octane fuel 89UL), Premium (93UL), and Race fuel (100UL and 110L).

#### ***Do you have chargers available on site?***

We have our own charging stations available here at M1 Concourse: level 2 ChargePoint Chargers. Each charger has (2) 1772 ports, and each tower is powered from (1) 40-amp breaker (240v).

#### ***Can we put down temporary lane markings?***

Temporary lane markings can only be applied if they can be completely removed at the end of the event with no residue or residual material left. Use of flour on the Arena surface is typically used for temporary markings.



# BEVERAGE PACKAGES

---

## ***Ultra-Premium Package***

**Liquor:** Tito's Vodka, Grey Goose Vodka, Bombay Sapphire Gin, Woodford Reserve Bourbon, Captain Morgan Rum, Bacardi Rum, Johnny Walker Black Scotch, Laphroaig Single Malt Scotch 10 Year, Maestro Dobel Diamond Blanco, Reposado, Anejo Tequila, Maker's Mark Cask Strength Bourbon, Hendrick's Gin & Grand Marnier

**Beer:** Coors Light, All Day IPA, Oberon, Modelo, Heineken, White Claw & High Noon

**Wine:** Sonoma-Cutrer Chardonnay, Daou Cabernet, Kenwood Pinot Noir, Kenwood Sauvignon Blanc & Daou Rose

## ***Premium Package***

**Liquor:** Tito's Vodka, Grey Goose Vodka, Bombay Sapphire Gin, Woodford Reserve Bourbon, Captain Morgan Rum, Bacardi Rum, Johnny Walker Black Scotch, Laphroaig Single Malt Scotch 10 Year & Maestro Dobel Diamond Blanco Tequila

**Beer:** Coors Light, All Day IPA, Oberon, Modelo, Heineken, White Claw & High Noon

**Wine:** Sonoma-Cutrer Chardonnay, Daou Cabernet, Kenwood Pinot Noir, & Kenwood Sauvignon Blanc

## ***Track Package***

**Liquor:** Tanqueray Sterling Vodka, Beefeater Gin, Jim Beam Bourbon, Cruzan Rum, Johnny Walker Black Scotch, Sauza Gold & Silver Tequila

**Beer:** Coors Light, Modelo, Heineken, White Claw & High Noon

**Wine:** Los Vacos Cabernet, Los Vacos Chardonnay, La Petite Perriere Sauvignon Blanc, & Boen Pinot Noir

## ***Beer & Wine Package***

**Beer:** Coors Light, All Day IPA, Oberon, Modelo, Heineken, White Claw & High Noon

**Wine:** Los Vacos Cabernet, Los Vacos Chardonnay, La Petite Perriere Sauvignon Blanc & Boen Pinot Noir

## ***Non-Alcoholic Package***

**Soda:** Coke, Diet Coke, Coke Zero, Sprite, Seagram's Ginger Ale, Minute Maid Lemonade, Dasani Water

## ***Coffee & Tea***

**Rootless Coffee:** (Michigan-based Brand) The roast is a blend of coffee from Brazil and Peru roasted at a Medium profile, giving it a smooth chocolate and nutty taste.

**Assorted Tea Flavors:** Earl Grey, Constant Comment, English Teatime, Lemon Lift & Green Tea

## ***Bar Enhancements***

Champagne Toast, Signature Drink, Speciality Mocktail, Flight Stations, Craft Beer, Table Wine Service, Hot Cider, Hot Chocolate

